



Leica ScanStation Pxx

Remote Control via Leica CS35

v1.0

- when it has to be **right**

Leica
Geosystems

Leica ScanStation Pxx

Remote Control via Leica CS35

Content

- Prerequisite
- WiFi settings on scanner
- WiFi settings on tablet
- RDP connection on tablet
- Pxx Simulator on tablet
- Pxx Data Copy Tool on tablet

Leica ScanStation Pxx

Remote Control via Leica CS35

Prerequisite

- Leica ScanStation Pxx with FW 2.xx or higher installed
- Leica CS35 tablet computer
- No additional external hardware needed



Leica ScanStation Pxx

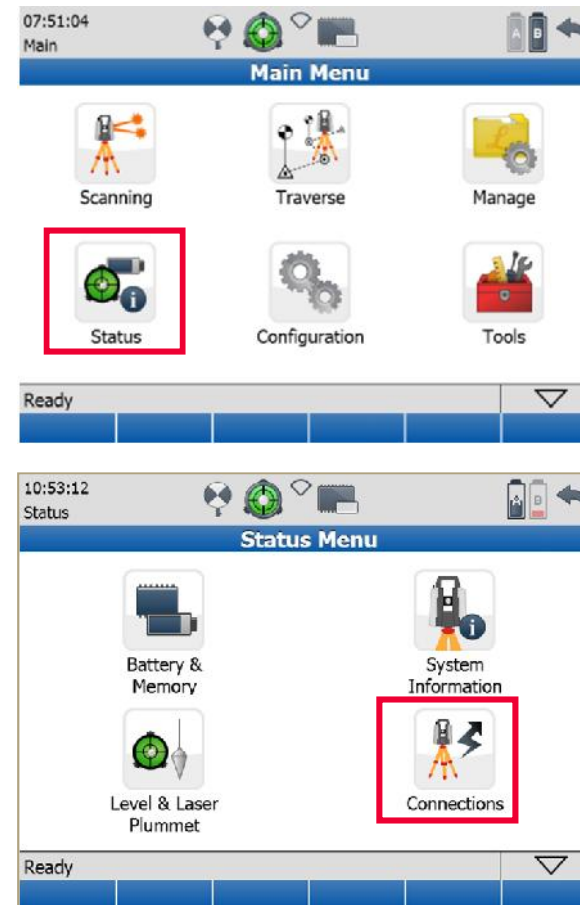
Remote Control via Leica CS35

Select WiFi settings on scanner

- Start the Leica ScanStation Pxx and wait for the boot process to finish.

- Select  Status to get to the Status Menu.



- In the Status Menu select  Connections to open the WiFi Configuration menu.

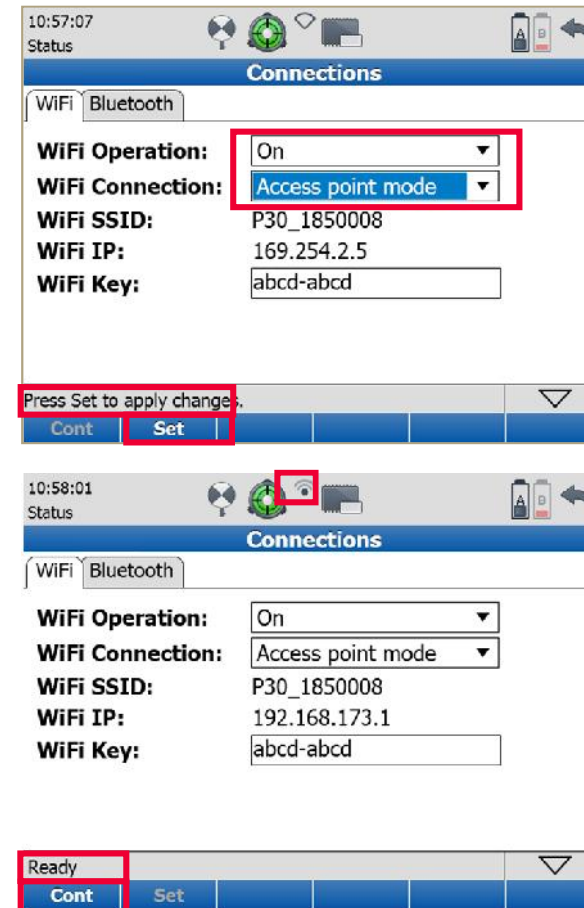


Leica ScanStation Pxx

Remote Control via Leica CS35

Select WiFi settings on scanner cont'd

- In the **Wifi Configuration** menu set
 - WiFi Operation = On
 - WiFi Connection = Access point mode
- Press **Set** to confirm these settings. Wait for the information line to change from **Enabling WiFi...** to **Ready**.
- Check that the WiFi icon in the status bar changed from off  to on .
- Press **Cont** to return to the **Status Menu**.




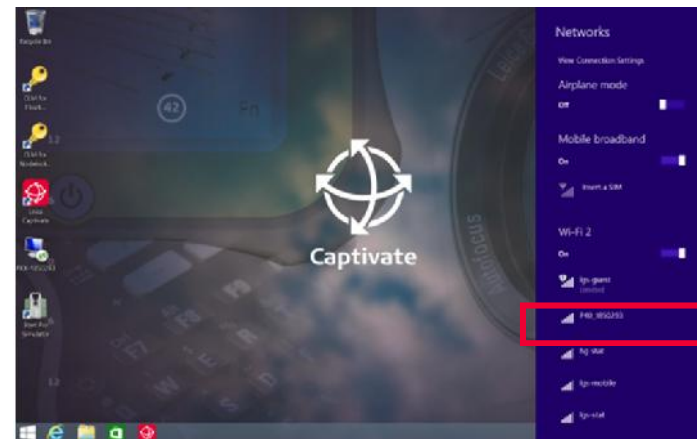
- when it has to be **right**

Leica ScanStation Pxx

Remote Control via Leica CS35

Select WiFi settings on tablet

- Press the network icon  to open the **Networks** page
- In the list of visible WiFi networks select **Pxx_185xxxx** with 185xxxx being the scanner's serial number.

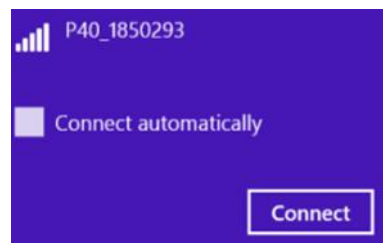


Leica ScanStation Pxx

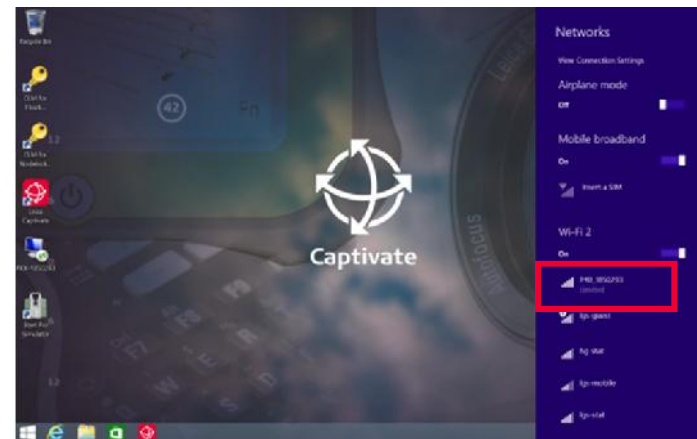
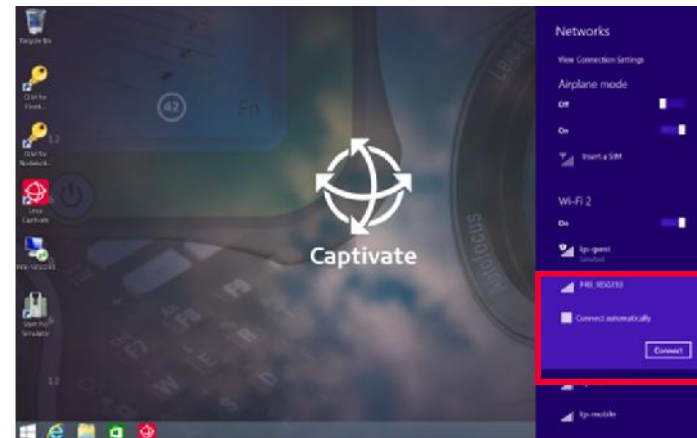
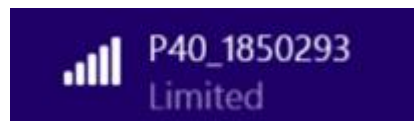
Remote Control via Leica CS35

Select WiFi settings on tablet cont'd

- Connect to Pxx_185xxxx



- Leave the WiFi page once connection to Pxx_185xxxx has been established

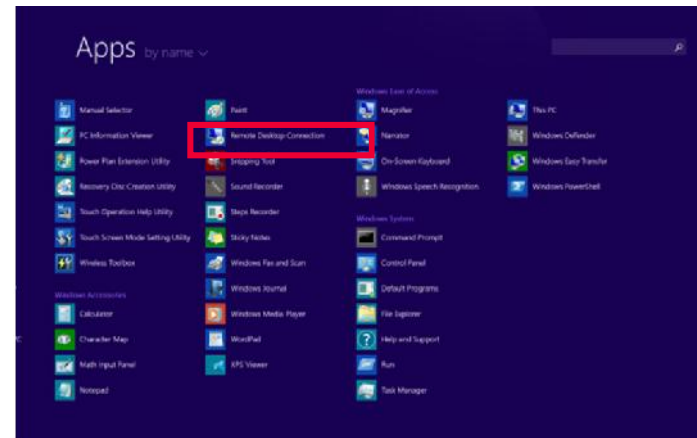



Leica ScanStation Pxx

Remote Control via Leica CS35

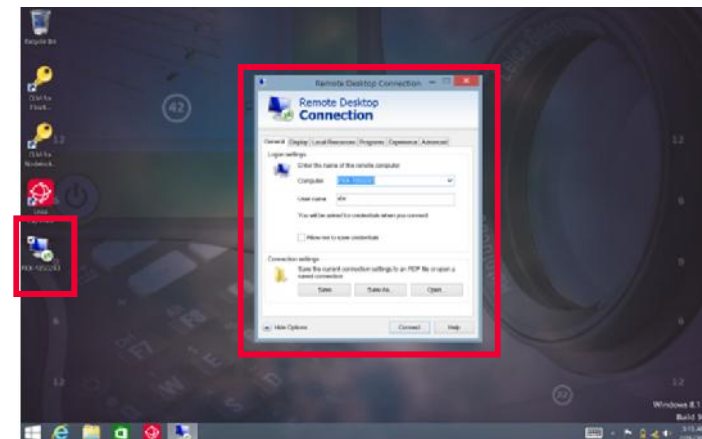
Create RDP connection on tablet

- In the **Apps** menu select the **Remote Desktop Connection** app



- In the **Remote Desktop Connection** app  create a connection with


- Computer = PXX-185xxxx
- User name = sbc

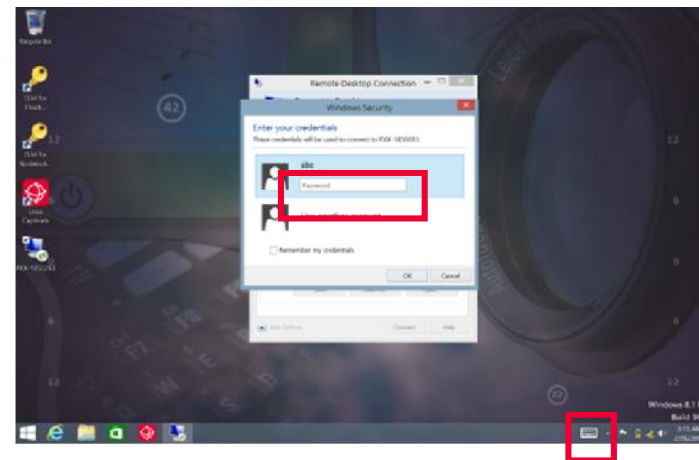
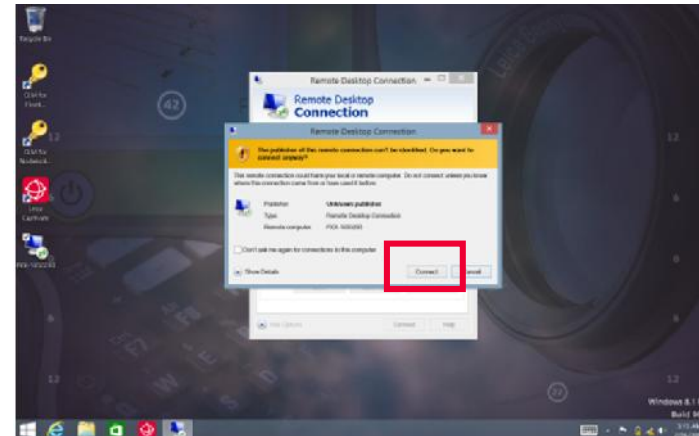


Leica ScanStation Pxx

Remote Control via Leica CS35

Create RDP connection on tablet cont'd

- Connect via the **Remote Desktop Connection** app to the scanner
- Use the virtual keyboard  to enter the password

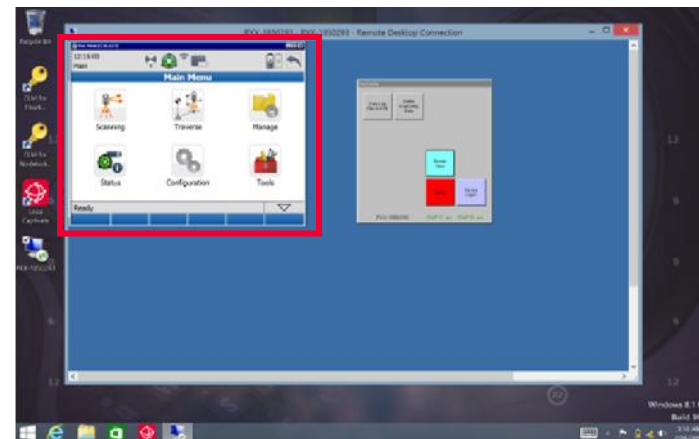
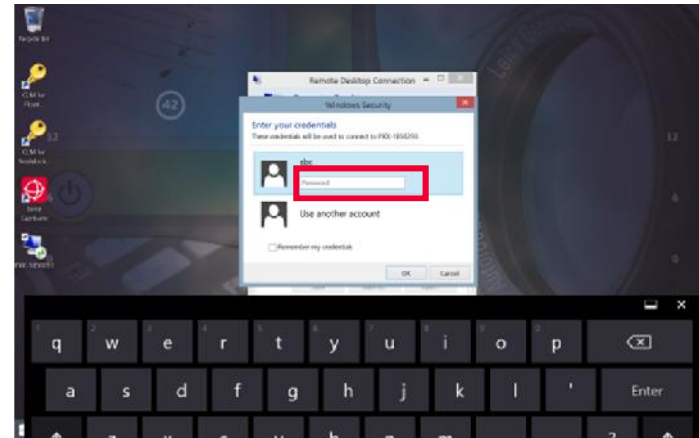


Leica ScanStation Pxx

Remote Control via Leica CS35

Create RDP connection on tablet cont'd

- Enter the password «sbc»
- Once connection has been established use the scanner MMI in the Remote Desktop Connection window to control the scanner remotely

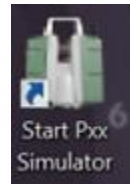


Leica ScanStation Pxx

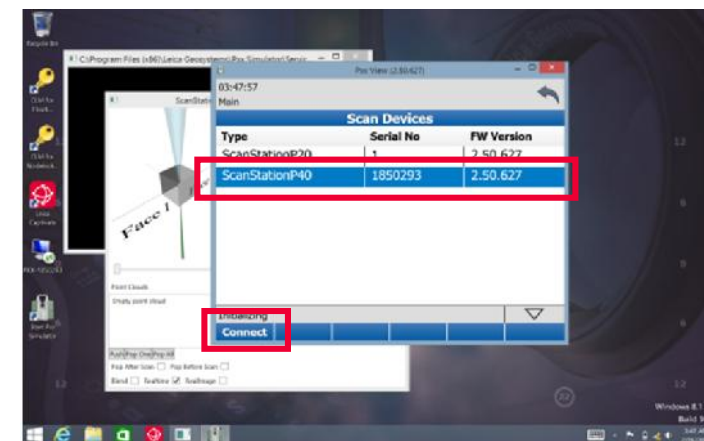
Remote Control via Leica CS35

Pxx Simulator

- Install the free tool **Pxx Simulator** on the tablet and start it by double-clicking on **Start Pxx Simulator**



- In **Scan Devices** window select a scanner from the list of found instruments and press **Connect**

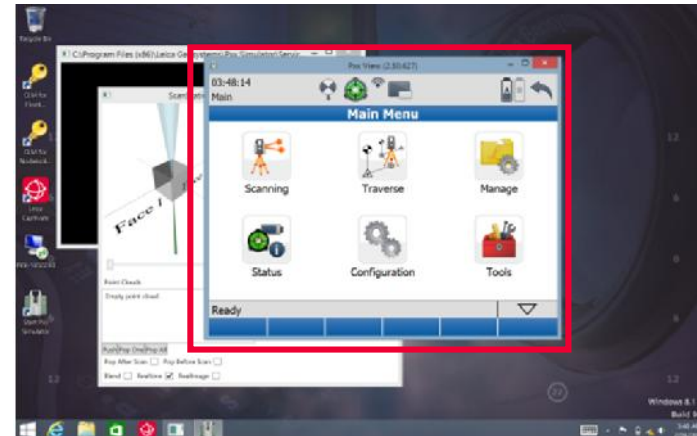


Leica ScanStation Pxx

Remote Control via Leica CS35

Pxx Simulator cont'd

- Once connection has been established use the scanner MMI to control the scanner remotely

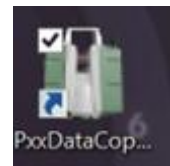


Leica ScanStation Pxx

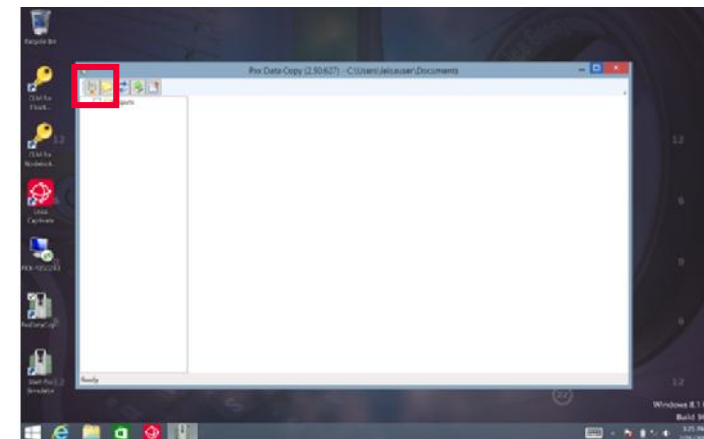
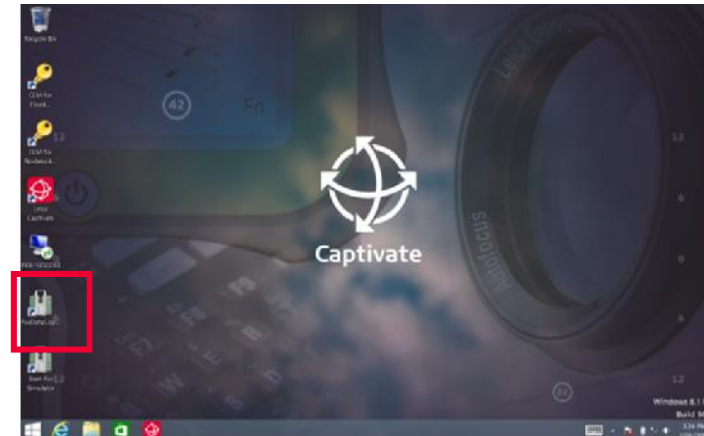
Remote Control via Leica CS35

Pxx Data Copy Tool

- Install the free **Pxx Data Copy Tool** on the tablet and start it by double-clicking on **Pxx DataCopy**



- In **Pxx Data Copy** window press the **Scanner** button



Leica ScanStation Pxx

Remote Control via Leica CS35

Pxx Data Copy Tool cont'd

- Select a scanner from the list of found instruments and press **OK**
- Once connection has been established browse in the hierarchy tree to the element to be displayed or copied
- It is not recommended to transfer large volume datasets via a WiFi connection due to the limited bandwidth, better use a cable connection in this case.

